

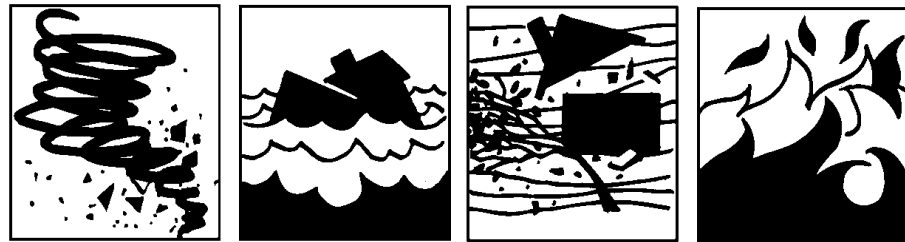
Special points of interest:

February 2010

- SNAC Youth Group "Football Fantasy" Champion Crowned
- "Knowing God's Triune Story" Lenten Study
- Wednesday Night Family Bible Study
- Pastor Andy's Trivia Question

Haitian Relief

DISASTER RELIEF



Help those in need

Many of us here at St. Luke Union Church are wondering what we can do to help the Haitian people after the devastating earthquake.

established links to donate to this disaster relief and can be linked from your computer at: www.ucc.org or www.pcusa.org.

collection and will be making a lump-sum donation.

Thank you for your prayers and support.

Both the PC(USA) and the UCC have

St. Luke Union Church is also taking a

Godspell

Laurie Vial and Claire Benjamin, members of a multi-denominational theatre group, will appear in Godspell the weekend of February 26th at St. John's Lutheran Church in rural Anchor.

There are dessert matinees on Saturday and Sunday and dinner theatre on Friday and Saturday evenings.

For ticket information or reservations, call (309) 824-0353.

Inside this issue:

Home Bible Class	2
Money Matters	3
Contributing Editor	4
Do You Have A Special Dish?	4
Green Energy Adjunct	5
From the Pastor	6
From Our Music Director	7

SNAC Youth Group “Fantasy Football” Champion Crowned

The inaugural season of the SNAC Youth Group “Fantasy Football” season has come to completion and the champion has been named.

Champion -
Master Pastor’s
 Coach Pastor Andy Gifford

2nd Place -
Rough Rider’s
 Coach Doug Ferrier

3rd Place -
Chicago Bears 23
 Coach Ben Gifford

4th Place -
Black Wolves
 Coach Logan Moret

Great season and lots of fun!

Plan to form a team and be a part of the fun next year.



Fantasy Football

“CAUGHT”

Caught participating during worship is a new program that we have started to help encourage the children to become active participants during worship.

Whenever a member of the congregation sees a child (preschool-confirmation class) participating in any part of worship they write the child’s name on a “Caught” card that will be in the pews.

Then they will place this card in the offering plate. The child will be recognized during the announcements, as well as, earn a small prize.

We can’t wait to see who will be “Caught” this month!

Home Bible Class

Pastor Andy, Mary Jane and Vi met in January and decided will be studying the book of JEREMIAH.

Our first meeting in 2010 will be March 11th. So you will have plenty of time to

get acquainted with Jeremiah.

At our first meeting of the year, we collect \$2.00 each for our annual dues, this will be in addition to our regular donation to the

Donna Thomas’ projects.

All the ladies of the church and friends are invited to join our class.



Money Matters

As of December 31, 2009

	JAN/DEC BUDGET	JAN/DEC ACTUAL
GENERAL FUND		
Receipts	\$229,700	\$234,149
Disbursements	\$246,132	\$233,965

5-YEAR CAPITAL CAMPAIGN

The 5-Year Capital Campaign is over. The cost of the project to replace the heating and air conditioning systems, resurface the Fellowship Hall roof and donate to the UCC Into the Future Campaign was \$264,120. Your contributions to this effort totaled \$255,937. The remaining \$8,200 was taken from the ongoing Capital Improvements Fund. Thank you for your support of the 5-Year Capital Campaign.

A summary of 2009 financial transactions is on the Details Board and the complete 2009 Financial Reports are included in the 2009 Annual Report mailed to your home.

Upcoming Events

1/25-2/8	Pastor Andy on Study Leave	2/22-3/29	Lenten Study	4/12-15	Set up for Spring Group Sale
1/29-31	Youth Retreat, Utica	3/14	New Members Welcome	4/16-17	Spring Group Sale
1/31	Kathy Otto Preaching	3/14	Family Game & Pizza Night	4/23-25	Women's Retreat, Pilgrim Park
2/7	Tom Norwalk Preaching	3/15	Crop Hunger Walk Meeting	5/10	Mother-Daughter Banquet
2/14	Scout Sunday	3/31	Women's Club Luncheon		
2/14-28	New Members Class	4/10	Spring Cleaning		



Did you guess the answer to last month's trivia question?

What are the names of the wisemen?

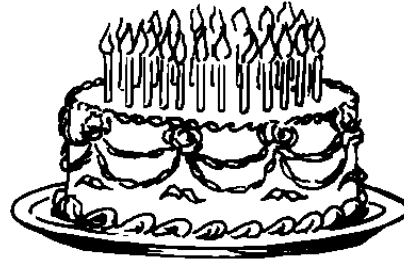
The names of the wisemen are not found in the Bible but began to be used among the 12th Century and are commonly known as Caspar, Melchior, and Balthasar.

February Trivia Question:

What is the significance of having ashes placed on your forehead on Ash Wednesday?

February Birthdays

Heather Burns - 1
 Ruth Shinn - 1
 Stuart Tabor - 3
 Robert Little - 8
 Dick Rice - 8
 Dawn Beemer - 9
 Charles McLean - 9
 Kyle Strong - 10
 Michael Verplaetse - 10
 Braxton Campbell - 12
 Doris KupperSmith - 13
 Ryan Tarter - 14



John Otto - 16
 Dick Swanson - 16
 Seth Baker - 18
 Jessie Cavitt - 19
 Olivia Hamilton - 19
 Pauline Justin - 23

Christopher Povilaitis - 23
 Carol Auyeung - 24
 Arnold Hering - 24
 Miles Keeton - 24
 Marcia Nagy - 24
 David Woodford - 25
 Theodore Streenz - 27
 Ellen Marquardt - 28
 Carson Schaefer - 28

Contributing Editor

Over the last several months, Jessie, our Church Secretary, while putting the *New Directions* newsletter together, has commented that there is very little information in it.

We are seeking a contributing editor to work

with Jessie and help her obtain the information we all need to know and help make *New Directions* the best newsletter around.

If interested, please see Jessie or Pastor Andy.

I wish to thank all my good friends at St. Luke Union Church for all the prayers, cards and calls I received during my time of pain. I really appreciate your thoughtfulness.

Margaret Bork

Do You Have A Special Dish?



It's a common thing for people to have a special dish or meal that they have become very good at preparing.

We are looking for you to

share this experience with fellow church goers. The Agape Ministry Team is looking for help in preparing a special meal for the Wednesday night activities.

Sign-up on the sheet located on the bulletin board and share your special meal with your church friends!

“Knowing God’s Triune Story” Lenten Study

Pastor Andy will be conducting a Lenten study called “Knowing God’s Triune Story.”

This study will tell the story of our Maker and examines why the trinity consists of three persons, and reflects on how the knowledge of the trinity affects our relationship with God.

Study time will be from

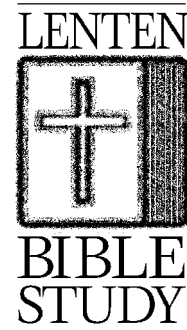
noon until 1:00 p.m. each Monday during Lent in Fellowship Hall.

Study begins February 22nd and concludes March 29th.

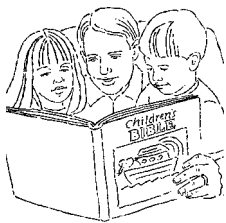
You are encouraged to bring your lunch and a friend as we study and reflect together.

Please sign-up (see bulletin board for sign-up sheet) so

we can order enough books.



Wednesday Night Family Bible Study



Put these words of mine in your heart and soul
Teach them to your children
Deuteronomy 11:18-19, NRSV

Kids of all ages, you're welcome to join the Family Bible Study!

Each Wednesday we learn at least one Scripture verse and one Life Slogan - it's a great, fun, active way to

study how Biblical truths work in our lives today.

Ask one of us why we don't need a green nose, how we've been redeemed (and what we redeemed in our fun-filled auction), and

how to turn water into wine!

We meet each Wednesday night at 6 p.m. after dinner to study - bring an adult with you and join us!

Green Energy Adjunct

Laurie Vial has been hired as the new Green Energy Adjunct with Great Rivers Presbytery.

She will be working part time promoting energy conservation and environmental stewardship to churches and church members.

Watch for her weekly column in the Monday

e-mail newsletter from the Presbytery.

To be added to the mailing list contact jbainbridge@greatriverspb.org.

Laurie's e-mail related to this position is greenenergy@greatriverspb.org.

Among her other duties

Laurie will be available as a speaker to church groups.

St. Luke Union has always strived to be environmentally responsible with its recycling program and other policies.

Laurie is also still pursuing full time employment.

From the **PASTOR**—

Different churches have different gifts and ways they go about serving God's kingdom.

While in Elmhurst, we were known as "*The Seven Day a Week Church*," meaning we had things happening at church each day of the week, not just on Sunday's.

In Ponca City, we were known as the "*Best Kept Secret in Town*."

This is funny in a way, since God in no way wishes to be kept a secret but to be proclaimed to the world.

I think it would have been better if we were the worst kept secret.

So what is it that St. Luke Union Church has been blessed with as one of God's gifts?

Well what I most often hear is that we are a church that cares much for each other and once you enter through our doors a welcome greeting and hug are often waiting.

We are a congregation that is concerned with the community and continually looking for ways to help.



**BRING
YOUR FRIENDS
TO CHURCH**

But, there is always a but, what do we do to bring people through our doors to introduce them to the gifts of our church and the way of Jesus Christ?

If we are so happy about the things we are doing, when was the last time that you invited someone to share our gift?

We at St. Luke Union Church are a wonderful place to worship and develop a relationship with God.

We now need to get the word out and invite the people of Bloomington-Normal to experience St. Luke Union Church.

People often ask me how to approach people, others explain that they don't feel comfortable pushing their

faith.

These are things I understand and also things God understands but I also know that God presents subtle opportunities to share the word and invite persons into the fold.

These conversations can come up at the water cooler at work, in the lunch room and even in the check-out lane. I would like to challenge you all to be ready for these Christ-like opportunities to share St. Luke Union Church and then let God do the rest.

You will be surprised how well God grows the seeds that we each plant.

Matthew 13:8 Other seeds fell on good soil and brought forth grain, some a hundredfold, some sixty, some thirty.

Plant some seeds.

Peace,

Rev Andy Gifford



From Our Music Director . . .

I hope many of you were able to join us for the Christmas Sunday music celebration and cantata.

The choir did a fabulous job preparing the cantata along with the handbells and the youth that sang.

Christmas Eve also included many music selections to praise Christ's birth.

I would like to thank all the members of those groups and the soloists that participated.

While I took my year leave time, Marsha Hinthorn, Karen Collier, and Lisa DeBruine (earlier in the year) did a fabulous job of

filling in those Sundays. Also, thanks to Norma and Bud Roberts for singing a duet for the special music the one Sunday I was not there.

Our musical groups are in full swing for another year.

We always welcome and encourage your participation in our musical worship.

Look forward to a new year with new ideas and variety.

The organ will also be undergoing a major maintenance overhaul in June and will be not used for a time.

This is a continuation of improvements made last year to smooth out the Great tonality. The Swell box shutters have a new motor and are now working properly.

This year the leather in the Great section of the organ will be replaced and various adjustments made while the section is totally disassembled.

I always love to hear your feedback and ideas about the music at St. Luke.

I'm looking forward to a great 2010!

In Christ!

David Sulzberger



St. Luke Union Church

2101 E. Washington St.
Bloomington, IL 61701

Phone: 309-663-7437
Email: mail@stlukeunion.org

Non Profit
US Postage Paid
Bloomington, Illinois
Permit No. 10

Return Service Requested



FEBRUARY

The word "FEBRUARY" is rendered in a large, bold, black-outlined font. Each letter is filled with a white background and contains several small, solid black hearts. The word is surrounded by larger, solid black hearts of various sizes, creating a decorative and affectionate look.